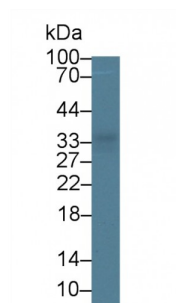


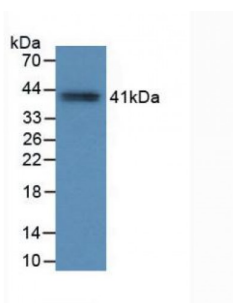
Abbexa Ltd, Innovation Centre, Cambridge Science Park, Cambridge, CB4 0EY, UK  
Telephone: +44 (0) 1223 755950 - Fax: +44 (0) 1223 755951 - E-Mail: [info@abbexa.com](mailto:info@abbexa.com)

## Tryptase (TPS) Antibody

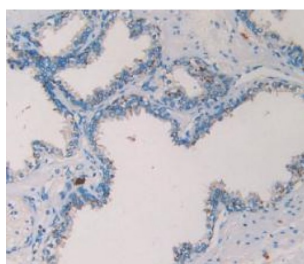
Catalogue No.: abx132093



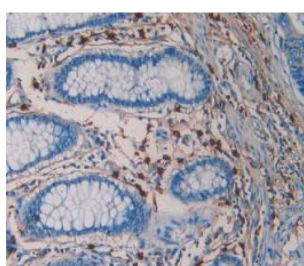
Western blot analysis of Human Liver lysate, using Human TPS Antibody (5 µg/ml) and HRP-conjugated Goat Anti-Mouse antibody ([abx400001](#), 0.2 µg/ml).



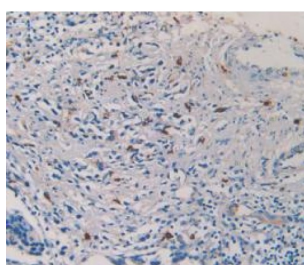
Western blot analysis of recombinant Human TPS.



IHC-P analysis of Human Prostate Gland Tissue, with DAB staining.

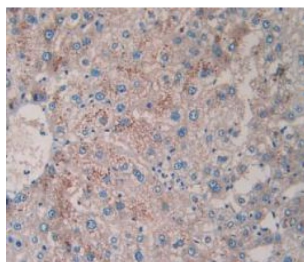


IHC-P analysis of Human Rectum Cancer Tissue, with DAB staining.



IHC-P analysis of Human Prostate Gland Cancer Tissue, with DAB staining.

Abbexa Ltd, Innovation Centre, Cambridge Science Park, Cambridge, CB4 0EY, UK  
Telephone: +44 (0) 1223 755950 - Fax: +44 (0) 1223 755951 - E-Mail: [info@abbexa.com](mailto:info@abbexa.com)



IHC-P analysis of Human Liver Tissue, with DAB staining.

Tryptase Antibody is a Mouse Monoclonal against Tryptase.

**Target:** Tryptase

**Reactivity:** Human

**Host:** Mouse

**Clonality:** Monoclonal

**Tested Applications:** WB, IHC, IF/ICC, IP

**Recommended dilutions:** Optimal dilutions/concentrations should be determined by the end user.

**Immunogen:** Gly161-Tyr262

**Purification:** Protein A + Protein G affinity chromatography.

**Form:** Liquid

**Conjugation:** Unconjugated

**Storage:** Store at 4 °C for frequent use. Aliquot and store at -20 °C for one year. Avoid repeated freeze/thaw cycles.

**Swiss Prot:** [Q15661](#)

**Buffer:** 0.01 M PBS, pH 7.4, containing 0.05% Proclin-300, 50% glycerol.

**Note:** This product is for research use only.