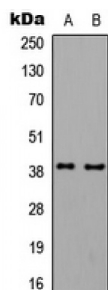


Abbexa Ltd, Innovation Centre, Cambridge Science Park, Cambridge, CB4 0EY, UK  
Telephone: +44 (0) 1223 755950 - Fax: +44 (0) 1223 755951 - E-Mail: [info@abbexa.com](mailto:info@abbexa.com)

## Guanine Nucleotide-Binding Protein G(olf) Subunit Alpha (GNAL) Antibody

Catalogue No.: abx133018



GNAL Antibody is a Rabbit Polyclonal against GNAL.

**Target:** GNAL

**Reactivity:** Human, Mouse, Rabbit, Cow

**Host:** Rabbit

**Clonality:** Polyclonal

**Tested Applications:** WB

**Recommended dilutions:** WB: 1/500 - 1/1000. Optimal dilutions/concentrations should be determined by the end user.

**Immunogen:** KLH-conjugated synthetic peptide encompassing a sequence within the center region of human GNAL. The exact sequence is proprietary.

**Purification:** The antibody was purified by immunogen affinity chromatography.

**Form:** Liquid

**Conjugation:** Unconjugated

**Specificity:** Recognizes endogenous levels of GNAL protein.

**Storage:** Aliquot and store at -20°C for one year. Avoid repeated freeze/thaw cycles.

**Swiss Prot:** [P38405](#) [Q8CGK7](#) [P38406](#)

**GeneID:** [2774](#)

**Gene Symbol:** GNAL

Abbexa Ltd, Innovation Centre, Cambridge Science Park, Cambridge, CB4 0EY, UK  
Telephone: +44 (0) 1223 755950 - Fax: +44 (0) 1223 755951 - E-Mail: [info@abbexa.com](mailto:info@abbexa.com)

**Buffer:** Liquid in 0.42% Potassium phosphate, 0.87% Sodium chloride, pH 7.3, 30% glycerol, and 0.01% sodium azide.

**Note:** This product is for research use only.