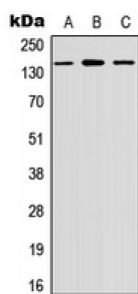
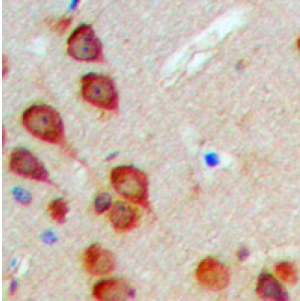


MAPK/ERK Kinase Kinase Kinase 6 (MEKKK6) Antibody

Catalogue No.: abx133019



MEKKK6 Antibody is a Rabbit Polyclonal against MEKKK6.

Target: MEKKK6

Reactivity: Human, Mouse, Rabbit, Cow

Host: Rabbit

Clonality: Polyclonal

Tested Applications: WB, IHC

Recommended dilutions: WB: 1/500 - 1/1000, IH: 1/100 - 1/200. Optimal dilutions/concentrations should be determined by the end user.

Immunogen: KLH-conjugated synthetic peptide encompassing a sequence within the center region of human MEKKK6. The exact sequence is proprietary.

Purification: The antibody was purified by immunogen affinity chromatography.

Form: Liquid

Conjugation: Unconjugated

Specificity: Recognizes endogenous levels of MEKKK6 protein.

Abbexa Ltd, Innovation Centre, Cambridge Science Park, Cambridge, CB4 0EY, UK
Telephone: +44 (0) 1223 755950 - Fax: +44 (0) 1223 755951 - E-Mail: info@abbexa.com

Storage: Aliquot and store at -20°C for one year. Avoid repeated freeze/thaw cycles.

Swiss Prot: [Q8N4C8](#) [Q9JM52](#) [F1LP90](#)

GeneID: [50488](#)

Gene Symbol: MINK1

Buffer: Liquid in 0.42% Potassium phosphate, 0.87% Sodium chloride, pH 7.3, 30% glycerol, and 0.01% sodium azide.

Note: This product is for research use only.