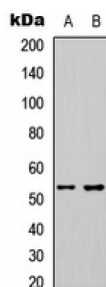
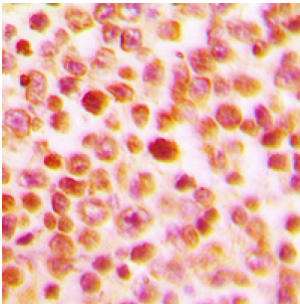
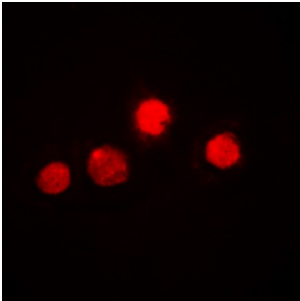


Abbexa Ltd, Innovation Centre, Cambridge Science Park, Cambridge, CB4 0EY, UK
Telephone: +44 (0) 1223 755950 - Fax: +44 (0) 1223 755951 - E-Mail: info@abbexa.com

V-Ets Erythroblastosis Virus E26 Oncogene Homolog 1 (Avian) (ETS1) Antibody

Catalogue No.: abx133029



ETS1 Antibody is a Rabbit Polyclonal against ETS1.

Target: ETS1

Reactivity: Human, Mouse, Rabbit, Cow, Chicken, Dog, Pig, Rabbit

Host: Rabbit

Clonality: Polyclonal

Tested Applications: WB, IHC, IF/ICC

Recommended dilutions: WB: 1/500 - 1/1000, IH: 1/100 - 1/200, IF/ICC: 1/100 - 1/500. Optimal dilutions/concentrations should be determined by the end user.

Abbexa Ltd, Innovation Centre, Cambridge Science Park, Cambridge, CB4 0EY, UK
Telephone: +44 (0) 1223 755950 - Fax: +44 (0) 1223 755951 - E-Mail: info@abbexa.com

Immunogen:	KLH-conjugated synthetic peptide encompassing a sequence within the N-term region of human ETS1. The exact sequence is proprietary.
Purification:	The antibody was purified by immunogen affinity chromatography.
Form:	Liquid
Conjugation:	Unconjugated
Specificity:	Recognizes endogenous levels of ETS1 protein.
Storage:	Aliquot and store at -20°C for one year. Avoid repeated freeze/thaw cycles.
Swiss Prot:	P14921 P27577 P41156
GeneID:	2113 24356
Gene Symbol:	ETS1
Buffer:	Liquid in 0.42% Potassium phosphate, 0.87% Sodium chloride, pH 7.3, 30% glycerol, and 0.01% sodium azide.
Note:	This product is for research use only.