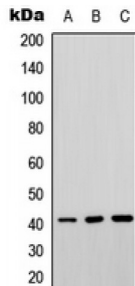


Abbexa Ltd, Innovation Centre, Cambridge Science Park, Cambridge, CB4 0EY, UK
Telephone: +44 (0) 1223 755950 - Fax: +44 (0) 1223 755951 - E-Mail: info@abbexa.com

Septin 3 (SEPT3) Antibody

Catalogue No.: abx133101



Septin 3 Antibody is a Rabbit Polyclonal against Septin 3.

Target: Septin 3 (SEPT3)

Reactivity: Human, Mouse, Rabbit, Cow, Zebrafish

Host: Rabbit

Clonality: Polyclonal

Tested Applications: WB

Recommended dilutions: WB: 1/500 - 1/1000. Optimal dilutions/concentrations should be determined by the end user.

Immunogen: KLH-conjugated synthetic peptide encompassing a sequence within the center region of human Septin 3. The exact sequence is proprietary.

Purification: The antibody was purified by immunogen affinity chromatography.

Form: Liquid

Conjugation: Unconjugated

Specificity: Recognizes endogenous levels of Septin 3 protein.

Storage: Aliquot and store at -20°C for one year. Avoid repeated freeze/thaw cycles.

Swiss Prot: [Q9UH03](#) [Q9Z1S5](#) [Q9WU34](#)

GenEID: [55964](#) [56003](#)

Buffer: Liquid in 0.42% Potassium phosphate, 0.87% Sodium chloride, pH 7.3, 30% glycerol, and 0.01% sodium azide.

Abbexa Ltd, Innovation Centre, Cambridge Science Park, Cambridge, CB4 0EY, UK
Telephone: +44 (0) 1223 755950 - Fax: +44 (0) 1223 755951 - E-Mail: info@abbexa.com

Note: This product is for research use only.