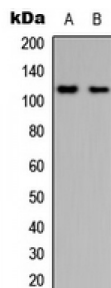
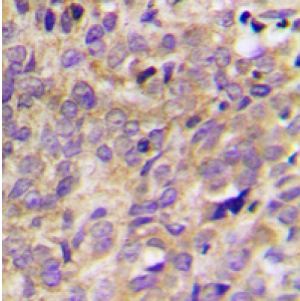


Abbexa Ltd, Innovation Centre, Cambridge Science Park, Cambridge, CB4 0EY, UK
Telephone: +44 (0) 1223 755950 - Fax: +44 (0) 1223 755951 - E-Mail: info@abbexa.com

Protein-Tyrosine Kinase 2-Beta (PYK2) Antibody

Catalogue No.: abx133123



PYK2 Antibody is a Rabbit Polyclonal against PYK2.

Target:	PYK2
Reactivity:	Human, Mouse, Rabbit, Monkey
Host:	Rabbit
Clonality:	Polyclonal
Tested Applications:	WB, IHC
Recommended dilutions:	WB: 1/500 - 1/1000, IH: 1/100 - 1/200. Optimal dilutions/concentrations should be determined by the end user.
Immunogen:	KLH-conjugated synthetic peptide encompassing a sequence within the center region of human PYK2. The exact sequence is proprietary.
Purification:	The antibody was purified by immunogen affinity chromatography.
Form:	Liquid
Conjugation:	Unconjugated
Specificity:	Recognizes endogenous levels of PYK2 protein.

Abbexa Ltd, Innovation Centre, Cambridge Science Park, Cambridge, CB4 0EY, UK
Telephone: +44 (0) 1223 755950 - Fax: +44 (0) 1223 755951 - E-Mail: info@abbexa.com

Storage: Aliquot and store at -20°C for one year. Avoid repeated freeze/thaw cycles.

Swiss Prot: [Q14289](#) [Q9QVP9](#) [P70600](#)

GeneID: [2185](#) [50646](#)

Gene Symbol: PTK2B

Buffer: Liquid in 0.42% Potassium phosphate, 0.87% Sodium chloride, pH 7.3, 30% glycerol, and 0.01% sodium azide.

Note: This product is for research use only.