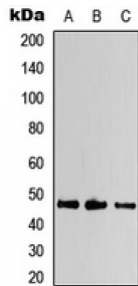


Abbexa Ltd, Innovation Centre, Cambridge Science Park, Cambridge, CB4 0EY, UK  
Telephone: +44 (0) 1223 755950 - Fax: +44 (0) 1223 755951 - E-Mail: [info@abbexa.com](mailto:info@abbexa.com)

## Kir2.1 (Kir2.1) Antibody

Catalogue No.: abx133149



Kir2.1 Antibody is a Rabbit Polyclonal against Kir2.1.

**Target:** Kir2.1

**Reactivity:** Human, Mouse, Rat

**Host:** Rabbit

**Clonality:** Polyclonal

**Tested Applications:** WB

**Recommended dilutions:** WB: 1/500 - 1/1000. Optimal dilutions/concentrations should be determined by the end user.

**Immunogen:** KLH-conjugated synthetic peptide encompassing a sequence within the center region of human Kir2.1. The exact sequence is proprietary.

**Purification:** The antibody was purified by immunogen affinity chromatography.

**Form:** Liquid

**Conjugation:** Unconjugated

**Specificity:** Recognizes endogenous levels of Kir2.1 protein.

**Storage:** Aliquot and store at -20°C for one year. Avoid repeated freeze/thaw cycles.

**Swiss Prot:** [P63252](#) [P35561](#) [Q64273](#)

**GenID:** [3759](#) [29712](#)

**Gene Symbol:** KCNJ2

Abbexa Ltd, Innovation Centre, Cambridge Science Park, Cambridge, CB4 0EY, UK  
Telephone: +44 (0) 1223 755950 - Fax: +44 (0) 1223 755951 - E-Mail: [info@abbexa.com](mailto:info@abbexa.com)

**Buffer:** Liquid in 0.42% Potassium phosphate, 0.87% Sodium chloride, pH 7.3, 30% glycerol, and 0.01% sodium azide.

**Note:** This product is for research use only.