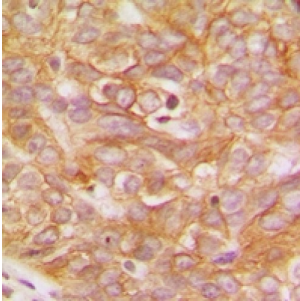


Abbexa Ltd, Innovation Centre, Cambridge Science Park, Cambridge, CB4 0EY, UK  
Telephone: +44 (0) 1223 755950 - Fax: +44 (0) 1223 755951 - E-Mail: [info@abbexa.com](mailto:info@abbexa.com)

## V-Yes-1 Yamaguchi Sarcoma Viral Related Oncogene Homolog (LYN) Antibody

Catalogue No.: abx133462



Rabbit polyclonal antibody to LYN.

<b>Target:</b>	LYN
<b>Reactivity:</b>	Human, Mouse, Rat, Cow, Chicken, Sheep
<b>Host:</b>	Rabbit
<b>Clonality:</b>	Polyclonal
<b>Tested Applications:</b>	WB, IHC, IP
<b>Recommended dilutions:</b>	WB: (1/500 - 1/1000), IHC: (1/100 - 1/200), IP: (1/10 - 1/100). Optimal dilutions/concentrations should be determined by the end user.
<b>Immunogen:</b>	KLH-conjugated synthetic peptide encompassing a sequence within the C-term region of human LYN. The exact sequence is proprietary.
<b>Purification:</b>	The antibody was purified by affinity chromatography.
<b>Form:</b>	Liquid
<b>Isotype:</b>	IgG
<b>Specificity:</b>	Recognizes endogenous levels of LYN protein.
<b>Storage:</b>	Aliquot and store at -20 °C. Avoid repeated freeze/thaw cycles.
<b>Swiss Prot:</b>	<a href="#">P07948</a>
<b>GeneID:</b>	<a href="#">4067</a> <a href="#">17096</a> <a href="#">81515</a>

Abbexa Ltd, Innovation Centre, Cambridge Science Park, Cambridge, CB4 0EY, UK  
Telephone: +44 (0) 1223 755950 - Fax: +44 (0) 1223 755951 - E-Mail: [info@abbexa.com](mailto:info@abbexa.com)

**Gene Symbol:** LYN

**Buffer:** PBS, pH 7.3, 0.2% BSA, and 0.02% sodium azide.

**Note:** This product is for research use only.