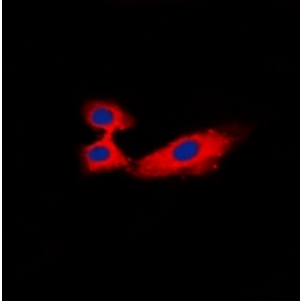


Abbexa Ltd, Innovation Centre, Cambridge Science Park, Cambridge, CB4 0EY, UK  
Telephone: +44 (0) 1223 755950 - Fax: +44 (0) 1223 755951 - E-Mail: [info@abbexa.com](mailto:info@abbexa.com)

## Rabphilin 3A (RPH3A) Antibody

Catalogue No.: abx133466



Rabbit polyclonal antibody to Rabphilin 3A.

**Target:** Rabphilin 3A

**Reactivity:** Human, Mouse, Rat

**Host:** Rabbit

**Clonality:** Polyclonal

**Tested Applications:** WB, IHC, IF/ICC

**Recommended dilutions:** WB: (1/500 - 1/1000), IHC: (1/100 - 1/200), IF/ICC: (1/100 - 1/500). Optimal dilutions/concentrations should be determined by the end user.

**Immunogen:** KLH-conjugated synthetic peptide encompassing a sequence within the center region of human Rabphilin 3A. The exact sequence is proprietary.

**Purification:** The antibody was purified by affinity chromatography.

**Form:** Liquid

**Isotype:** IgG

**Specificity:** Recognizes endogenous levels of Rabphilin 3A protein.

**Storage:** Aliquot and store at -20 °C. Avoid repeated freeze/thaw cycles.

**Swiss Prot:** [Q9Y2J0](#)

**GeneID:** [22895](#) [19894](#) [171039](#)

**Gene Symbol:** RPH3A

Abbexa Ltd, Innovation Centre, Cambridge Science Park, Cambridge, CB4 0EY, UK  
Telephone: +44 (0) 1223 755950 - Fax: +44 (0) 1223 755951 - E-Mail: [info@abbexa.com](mailto:info@abbexa.com)

**Buffer:** PBS, pH 7.3, 0.2% BSA, and 0.02% sodium azide.

**Note:** This product is for research use only.