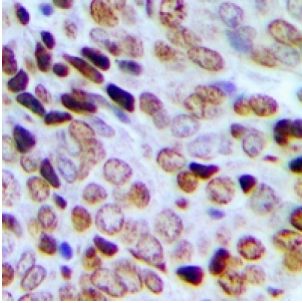


Abbexa Ltd, Innovation Centre, Cambridge Science Park, Cambridge, CB4 0EY, UK
Telephone: +44 (0) 1223 755950 - Fax: +44 (0) 1223 755951 - E-Mail: info@abbexa.com

Serine And Arginine Rich Splicing Factor 8 (SRSF8) Antibody

Catalogue No.: abx133742



Rabbit polyclonal antibody to SRSF8.

Target: SRSF8

Reactivity: Human

Host: Rabbit

Clonality: Polyclonal

Tested Applications: WB, IHC

Recommended dilutions: WB: (1/500 - 1/1000), IHC: (1/100 - 1/200). Optimal dilutions/concentrations should be determined by the end user.

Immunogen: KLH-conjugated synthetic peptide encompassing a sequence within the center region of human SRSF8. The exact sequence is proprietary.

Purification: The antibody was purified by affinity chromatography.

Form: Liquid

Isotype: IgG

Specificity: Recognizes endogenous levels of SRSF8 protein.

Storage: Aliquot and store at -20 °C. Avoid repeated freeze/thaw cycles.

Swiss Prot: [Q9BRL6](#)

GeneID: [10929](#)

Gene Symbol: SRSF8

Abbexa Ltd, Innovation Centre, Cambridge Science Park, Cambridge, CB4 0EY, UK
Telephone: +44 (0) 1223 755950 - Fax: +44 (0) 1223 755951 - E-Mail: info@abbexa.com

Buffer: PBS, pH 7.3, 0.2% BSA, and 0.02% sodium azide.

Note: This product is for research use only.