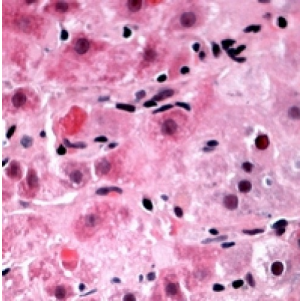


**Tigger Transposable Element Derived 3 (TIGD3) Antibody**

Catalogue No.: abx133745



Rabbit polyclonal antibody to TIGD3.

**Target:** TIGD3**Reactivity:** Human**Host:** Rabbit**Clonality:** Polyclonal**Tested Applications:** WB, IHC**Recommended dilutions:** WB: (1/500 - 1/1000), IHC: (1/100 - 1/200). Optimal dilutions/concentrations should be determined by the end user.**Immunogen:** KLH-conjugated synthetic peptide encompassing a sequence within the C-term region of human TIGD3. The exact sequence is proprietary.**Purification:** The antibody was purified by affinity chromatography.**Form:** Liquid**Isotype:** IgG**Specificity:** Recognizes endogenous levels of TIGD3 protein.**Storage:** Aliquot and store at -20 °C. Avoid repeated freeze/thaw cycles.**Swiss Prot:** [Q6B0B8](#)**GeneID:** [220359](#)**Gene Symbol:** TIGD3

Abbexa Ltd, Innovation Centre, Cambridge Science Park, Cambridge, CB4 0EY, UK  
Telephone: +44 (0) 1223 755950 - Fax: +44 (0) 1223 755951 - E-Mail: [info@abbexa.com](mailto:info@abbexa.com)

**Buffer:** PBS, pH 7.3, 0.2% BSA, and 0.02% sodium azide.

**Note:** This product is for research use only.