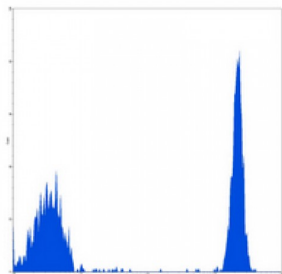


Abbexa Ltd, Innovation Centre, Cambridge Science Park, Cambridge, CB4 0EY, UK
Telephone: +44 (0) 1223 755950 - Fax: +44 (0) 1223 755951 - E-Mail: info@abbexa.com

T-cell Surface Glycoprotein CD4 (CD4) Antibody (PE)

Catalogue No.: abx134642



Flow cytometric analysis of human peripheral blood lymphocytes using CD4 Antibody (PE).

Mouse monoclonal antibody to CD4 (PE).

Target: CD4

Reactivity: Human

Host: Mouse

Clonality: Monoclonal

Tested Applications: IF/ICC, FCM

Purification: The antibody was purified by affinity chromatography.

Form: Liquid

Isotype: IgG_{2a}

Conjugation: PE

Specificity: Recognises human CD4.

Storage: Shipped and store at 4°C for one year. Do not freeze.

Swiss Prot: [P01730](#)

GeneID: [920](#)

Gene Symbol: CD4

Buffer: PBS, pH 7.3, 0.2% BSA, and 0.02% sodium azide.

Abbexa Ltd, Innovation Centre, Cambridge Science Park, Cambridge, CB4 0EY, UK
Telephone: +44 (0) 1223 755950 - Fax: +44 (0) 1223 755951 - E-Mail: info@abbexa.com

- Directions for use:**
1. Take 100 µl peripheral blood anticoagulated by EDTA and add to the bottom of a 5 ml tube.
 2. Add 10 µl labeled antibody to the bottom of the flow tube mixing with the whole blood; incubate for 20 minutes at room temperature away from light.
 3. Add 2 ml RBC lysis buffer; incubate for 10 minutes away from light after mixing; dissolve red blood cells.
 4. Sample tube is set to 1000 rpm centrifugation for 5 minutes; discard the supernatant.
 5. Add 2 ml PBS wash buffer to resuspend the cells; then 1000 rpm centrifugation for 5 minutes; discard the supernatant.
 6. Add 0.5 ml PBS wash buffer to resuspend the cells and detect by flow cytometry (sample should be determined on the day on the machine and can also be added fixation overnight at 4 °C then measured).

Note: This product is for research use only.