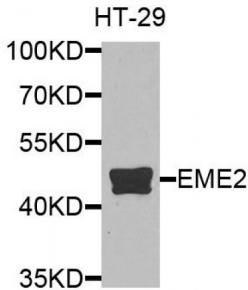


Probable Crossover Junction Endonuclease EME2 (EME2) Antibody

Catalogue No.: abx135835



Western blot analysis of extracts of HT-29 cells, using EME2 antibody (abx135835) at 1/1000 dilution.

EME2 Antibody is a Rabbit Polyclonal against EME2.

Target: EME2

Reactivity: Human

Host: Rabbit

Clonality: Polyclonal

Tested Applications: WB

Recommended dilutions: WB: 1/500 - 1/2000. Optimal dilutions/concentrations should be determined by the end user.

Purification: Affinity purified.

Form: Liquid

Isotype: IgG

Storage: Aliquot and store at -20 °C. Avoid repeated freeze/thaw cycles.

Molecular Weight: Calculated MW: 26 kDa/41 kDa
Observed MW: 41 kDa

Swiss Prot: [A4GXA9](#)

GeneID: [197342](#)

Gene Symbol: EME2

Concentration: > 1 mg/ml

Abbexa Ltd, Innovation Centre, Cambridge Science Park, Cambridge, CB4 0EY, UK
Telephone: +44 (0) 1223 755950 - Fax: +44 (0) 1223 755951 - E-Mail: info@abbexa.com

Buffer: PBS, pH 7.3, 0.02% sodium azide, 50% glycerol.

Note: This product is for research use only.