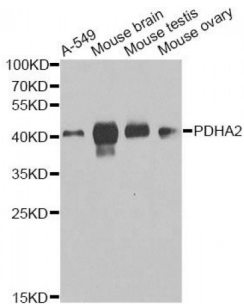


Abbexa Ltd, Innovation Centre, Cambridge Science Park, Cambridge, CB4 0EY, UK
Telephone: +44 (0) 1223 755950 - Fax: +44 (0) 1223 755951 - E-Mail: info@abbexa.com

Pyruvate Dehydrogenase E1 Component Subunit Alpha, Testis-Specific Form, Mitochondrial (PDHA2) Antibody

Catalogue No.: abx135863



Western blot analysis of extracts of various cell lines, using PDHA2 antibody (abx135863) at 1/1000 dilution.

PDHA2 Antibody is a Rabbit Polyclonal against PDHA2.

Target: PDHA2

Reactivity: Human, Mouse

Host: Rabbit

Clonality: Polyclonal

Tested Applications: WB

Recommended dilutions: WB: 1/500 - 1/2000. Optimal dilutions/concentrations should be determined by the end user.

Purification: Affinity purified.

Form: Liquid

Isotype: IgG

Storage: Aliquot and store at -20 °C. Avoid repeated freeze/thaw cycles.

Molecular Weight: Calculated MW: 42 kDa
Observed MW: 43 kDa

Swiss Prot: [P29803](#)

GeneID: [5161](#)

Gene Symbol: PDHA2

Concentration: > 1 mg/ml

Abbexa Ltd, Innovation Centre, Cambridge Science Park, Cambridge, CB4 0EY, UK
Telephone: +44 (0) 1223 755950 - Fax: +44 (0) 1223 755951 - E-Mail: info@abbexa.com

Buffer: PBS, pH 7.3, 0.02% sodium azide, 50% glycerol.

Note: This product is for research use only.