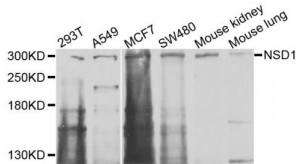


Nuclear Receptor Binding SET Domain Protein 1 (NSD1) Antibody

Catalogue No.: abx135901



Western blot analysis of extracts of various cell lines, using NSD1 antibody (abx135901) at 1/1000 dilution.

NSD1 Antibody is a Rabbit Polyclonal against NSD1.

Target: NSD1

Reactivity: Human, Mouse

Host: Rabbit

Clonality: Polyclonal

Tested Applications: WB

Recommended dilutions: WB: 1/500 - 1/1000. Optimal dilutions/concentrations should be determined by the end user.

Immunogen: Recombinant protein corresponding to 60-260 AA of human NSD1.

Purification: Affinity purified.

Form: Liquid

Isotype: IgG

Storage: Aliquot and store at -20 °C. Avoid repeated freeze/thaw cycles.

Molecular Weight: Calculated MW: 267 kDa/284 kDa/296 kDa
Observed MW: 297 kDa

Swiss Prot: [Q96L73](#)

GenID: [64324](#)

Gene Symbol: NSD1

Abbexa Ltd, Innovation Centre, Cambridge Science Park, Cambridge, CB4 0EY, UK
Telephone: +44 (0) 1223 755950 - Fax: +44 (0) 1223 755951 - E-Mail: info@abbexa.com

Concentration: 4.69 mg/ml

Buffer: PBS, pH 7.3, 0.02% sodium azide, 50% glycerol.

Note: This product is for research use only.