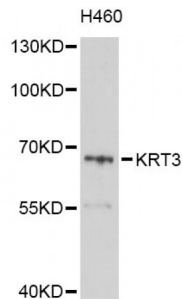


Keratin, Type II Cytoskeletal 3 (KRT3) Antibody

Catalogue No.: abx136028



Western blot analysis of extracts of H460 cells, using KRT3 Antibody (abx136028) at 1/1000 dilution.

KRT3 Antibody is a Rabbit Polyclonal against KRT3.

Target: KRT3

Reactivity: Human, Mouse

Host: Rabbit

Clonality: Polyclonal

Tested Applications: WB

Recommended dilutions: WB: 1/500 - 1/2000. Optimal dilutions/concentrations should be determined by the end user.

Purification: Affinity purified.

Form: Liquid

Isotype: IgG

Storage: Aliquot and store at -20 °C. Avoid repeated freeze/thaw cycles.

Molecular Weight: Calculated MW: 64 kDa
Observed MW: 65 kDa

Swiss Prot: [P12035](#)

GeneID: [3850](#)

Gene Symbol: KRT3

Concentration: > 1 mg/ml

Abbexa Ltd, Innovation Centre, Cambridge Science Park, Cambridge, CB4 0EY, UK
Telephone: +44 (0) 1223 755950 - Fax: +44 (0) 1223 755951 - E-Mail: info@abbexa.com

Buffer: PBS, pH 7.3, 0.02% sodium azide, 50% glycerol.

Note: This product is for research use only.