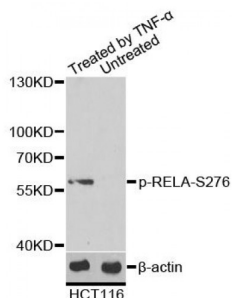


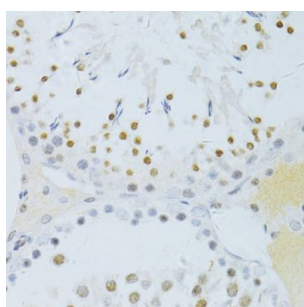
Abbexa Ltd, Innovation Centre, Cambridge Science Park, Cambridge, CB4 0EY, UK  
Telephone: +44 (0) 1223 755950 - Fax: +44 (0) 1223 755951 - E-Mail: [info@abbexa.com](mailto:info@abbexa.com)

## RELA (pS276) Antibody

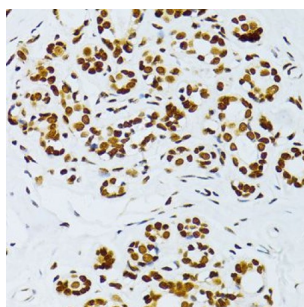
Catalogue No.: abx136147



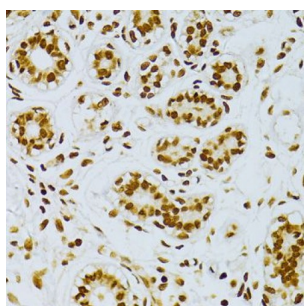
Western blot analysis of extracts of HCT116 cells, using Phospho-RELA-S276 antibody (abx136147). HCT116 cells were treated by TNF- $\alpha$  (20ng/ml) for 30 minutes.



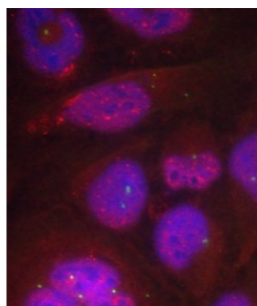
Immunohistochemistry of paraffin-embedded rat testis using Phospho-RELA-S276 antibody (abx136147) at dilution of 1/100 (40x lens).



Immunohistochemistry of paraffin-embedded human breast using Phospho-RELA-S276 antibody (abx136147) at dilution of 1/100 (40x lens).



Immunohistochemistry of paraffin-embedded human breast cancer using Phospho-RELA-S276 antibody (abx136147) at dilution of 1/100 (40x lens).



Immunofluorescence staining of methanol-fixed HeLa cells using Phospho-RELA-S276 antibody (abx136147).

RELA (pS276) Antibody is a Rabbit Polyclonal antibody against RELA (pS276). NF-kappa-B is a ubiquitous transcription factor

Abbexa Ltd, Innovation Centre, Cambridge Science Park, Cambridge, CB4 0EY, UK  
Telephone: +44 (0) 1223 755950 - Fax: +44 (0) 1223 755951 - E-Mail: [info@abbexa.com](mailto:info@abbexa.com)

involved in several biological processes. It is held in the cytoplasm in an inactive state by specific inhibitors. Upon degradation of the inhibitor, NF-kappa-B moves to the nucleus and activates transcription of specific genes. NF-kappa-B is composed of NFKB1 or NFKB2 bound to either REL, RELA, or RELB. The most abundant form of NF-kappa-B is NFKB1 complexed with the product of this gene, RELA. Four transcript variants encoding different isoforms have been found for this gene.

**Target:** RELA (pS276)

**Reactivity:** Human, Mouse, Rat

**Host:** Rabbit

**Clonality:** Polyclonal

**Tested Applications:** WB, IHC, IF/ICC

**Recommended dilutions:** WB: 1/500 - 1/2000, IHC: 1/50 - 1/100, IF/ICC: 1/20 - 1/50. Optimal dilutions/concentrations should be determined by the end user.

**Immunogen:** Synthetic Peptide. A phospho specific peptide corresponding to residues surrounding S276 of human RELA.

**Purification:** Affinity purified.

**Form:** Liquid

**Isotype:** IgG

**Conjugation:** Unconjugated

**Storage:** Aliquot and store at -20 °C. Avoid repeated freeze/thaw cycles.

**Molecular Weight:** Calculated MW: 58 kDa/59 kDa/60 kDa  
Observed MW: 60 kDa

**Swiss Prot:** [Q04206](#)

**GeneID:** [5970](#)

**Gene Symbol:** RELA

**Concentration:** > 1 mg/ml

**Buffer:** PBS, pH 7.3, 0.02% sodium azide, 50% glycerol.

**Note:** This product is for research use only.