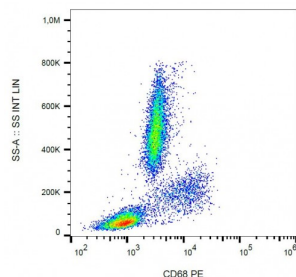


Abbexa Ltd, Innovation Centre, Cambridge Science Park, Cambridge, CB4 0EY, UK
Telephone: +44 (0) 1223 755950 - Fax: +44 (0) 1223 755951 - E-Mail: info@abbexa.com

Cluster of Differentiation 68 (CD68) Antibody (PE)

Catalogue No.: abx139319



Intracellular staining of human peripheral blood cells with anti-CD68 PE.

CD68 Antibody is a Mouse Monoclonal against CD68.

Target: CD68

Reactivity: Human

Host: Mouse

Clonality: Monoclonal

Tested Applications: IHC, FCM

Immunogen: Lysosomal contents of lung macrophages.

Isotype: IgG_{2b}

Conjugation: PE

Specificity: The mouse monoclonal antibody Y1/82A recognizes CD68 (LAMP4), a 110 kDa glycoprotein expressed mainly in cytoplasmic granules of monocytes/macrophages, granulocytes, and dendritic cells.

Storage: Store in the dark at 2-8°C. Do not freeze. Avoid prolonged exposure to light.

GeneID: [968](#)

Buffer: The reagent is provided in stabilizing PBS solution containing 15mM sodium azide.

Note: This product is for research use only.