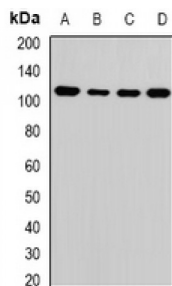
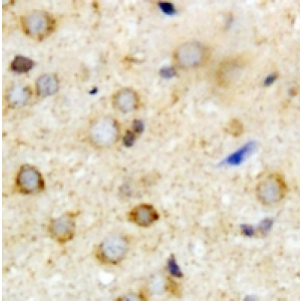


**ATPase Family AAA Domain-Containing Protein 3A (ATAD3A) Antibody**

Catalogue No.: abx141465



ATAD3A Antibody is a Rabbit Polyclonal against ATAD3A.

**Target:** ATAD3A**Reactivity:** Human**Host:** Rabbit**Clonality:** Polyclonal**Tested Applications:** WB, IHC**Recommended dilutions:** WB: 1/500 - 1/2000, IHC: 1/50 - 1/200. Optimal dilutions/concentrations should be determined by the end user.**Immunogen:** Recombinant full length protein of human ATAD3A.**Purification:** Affinity chromatography.**Form:** Liquid**Isotype:** IgG**Specificity:** Recognizes endogenous levels of ATAD3A protein.

Abbexa Ltd, Innovation Centre, Cambridge Science Park, Cambridge, CB4 0EY, UK  
Telephone: +44 (0) 1223 755950 - Fax: +44 (0) 1223 755951 - E-Mail: info@abbexa.com

**Storage:** Aliquot and store at -20 °C. Avoid repeated freeze/thaw cycles.

**GeneID:** [55210](#)

**Gene Symbol:** ATAD3A

**Buffer:** 0.42% Potassium phosphate, 0.87% Sodium chloride, pH 7.3, 30% glycerol, and 0.01% sodium azide.

**Note:** This product is for research use only.