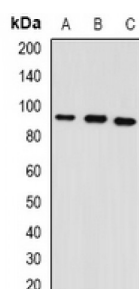
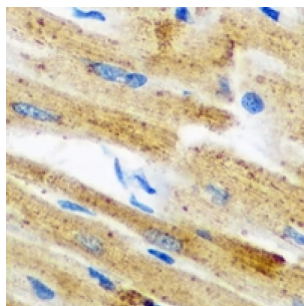


**Glycerol-3-Phosphate Acyltransferase, Mitochondrial (GPAM) Antibody**

Catalogue No.: abx141514



GPAM Antibody is a Rabbit Polyclonal against GPAM.

**Target:** GPAM**Reactivity:** Human, Mouse**Host:** Rabbit**Clonality:** Polyclonal**Tested Applications:** WB, IHC**Recommended dilutions:** WB: 1/500 - 1/2000, IHC: 1/50 - 1/200. Optimal dilutions/concentrations should be determined by the end user.**Immunogen:** Recombinant full length protein of human GPAM.**Purification:** Affinity chromatography.**Form:** Liquid**Isotype:** IgG**Specificity:** Recognizes endogenous levels of GPAM protein.

Abbexa Ltd, Innovation Centre, Cambridge Science Park, Cambridge, CB4 0EY, UK  
Telephone: +44 (0) 1223 755950 - Fax: +44 (0) 1223 755951 - E-Mail: [info@abbexa.com](mailto:info@abbexa.com)

**Storage:** Aliquot and store at -20 °C. Avoid repeated freeze/thaw cycles.

**GeneID:** [57678 14732](#)

**Gene Symbol:** GPAM

**Buffer:** 0.42% Potassium phosphate, 0.87% Sodium chloride, pH 7.3, 30% glycerol, and 0.01% sodium azide.

**Note:** This product is for research use only.