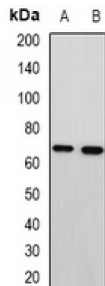


Metastasis Associated 1 Family Member 3 (MTA3) Antibody

Catalogue No.: abx141517



MTA3 Antibody is a Rabbit Polyclonal against MTA3.

Target: MTA3

Reactivity: Human, Mouse

Host: Rabbit

Clonality: Polyclonal

Tested Applications: WB

Recommended dilutions: WB: 1/500 - 1/2000. Optimal dilutions/concentrations should be determined by the end user.

Immunogen: Recombinant full length protein of human MTA3.

Purification: Affinity chromatography.

Form: Liquid

Isotype: IgG

Specificity: Recognizes endogenous levels of MTA3 protein.

Storage: Aliquot and store at -20 °C. Avoid repeated freeze/thaw cycles.

GeneID: [57504](#) [116871](#)

Gene Symbol: MTA3

Buffer: 0.42% Potassium phosphate, 0.87% Sodium chloride, pH 7.3, 30% glycerol, and 0.01% sodium azide.

Note: This product is for research use only.