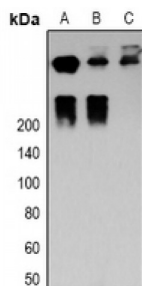


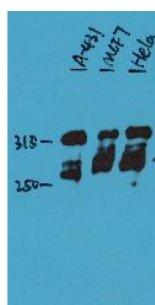
Abbexa Ltd, Innovation Centre, Cambridge Science Park, Cambridge, CB4 0EY, UK  
Telephone: +44 (0) 1223 755950 - Fax: +44 (0) 1223 755951 - E-Mail: [info@abbexa.com](mailto:info@abbexa.com)

## Desmoplakin (DSP) Antibody

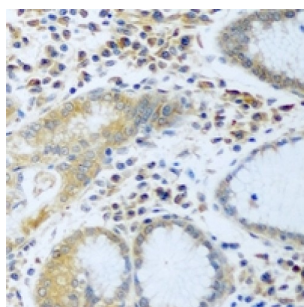
Catalogue No.: abx141547



Western blot analysis of Desmoplakin expression in MCF7 (A); HeLa (B); mouse heart (C) whole cell lysates.



Western blot analysis of Desmoplakin expression in A431 (A); MCF7 (B); HeLa cells lysate (C).



Immunohistochemical analysis of Desmoplakin staining in human stomach cancer formalin fixed paraffin embedded tissue section. The section was pre-treated using heat mediated antigen retrieval with sodium citrate buffer (pH 6.0). The section was then incubated with the antibody at room temperature and detected using an HRP conjugated compact polymer system. DAB was used as the chromogen. The section was then counterstained with haematoxylin and mounted with DPX.

Desmoplakin Antibody is a Rabbit Polyclonal against Desmoplakin.

**Target:** Desmoplakin

**Reactivity:** Human, Mouse

**Host:** Rabbit

**Clonality:** Polyclonal

**Tested Applications:** WB, IHC

**Recommended dilutions:** WB: 1/500 - 1/2000, IHC: 1/50 - 1/200. Optimal dilutions/concentrations should be determined by the end user.

**Immunogen:** KLH-conjugated synthetic peptide of human Desmoplakin.

Abbexa Ltd, Innovation Centre, Cambridge Science Park, Cambridge, CB4 0EY, UK  
Telephone: +44 (0) 1223 755950 - Fax: +44 (0) 1223 755951 - E-Mail: [info@abbexa.com](mailto:info@abbexa.com)

<b>Purification:</b>	Affinity chromatography.
<b>Form:</b>	Liquid
<b>Isotype:</b>	IgG
<b>Specificity:</b>	Recognizes endogenous levels of Desmoplakin protein.
<b>Storage:</b>	Aliquot and store at -20 °C. Avoid repeated freeze/thaw cycles.
<b>GeneID:</b>	<a href="#">1832</a> <a href="#">109620</a>
<b>Gene Symbol:</b>	DSP
<b>Buffer:</b>	0.42% Potassium phosphate, 0.87% Sodium chloride, pH 7.3, 30% glycerol, and 0.01% sodium azide.
<b>Note:</b>	This product is for research use only.