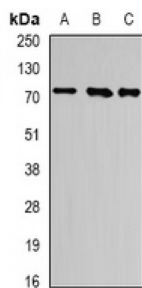
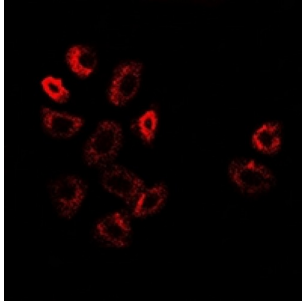


Abbexa Ltd, Innovation Centre, Cambridge Science Park, Cambridge, CB4 0EY, UK
Telephone: +44 (0) 1223 755950 - Fax: +44 (0) 1223 755951 - E-Mail: info@abbexa.com

Activating Transcription Factor 6 (ATF6) Antibody

Catalogue No.: abx141562



ATF6 Antibody is a Rabbit Polyclonal against ATF6.

Target: ATF6

Reactivity: Human, Mouse, Rat

Host: Rabbit

Clonality: Polyclonal

Tested Applications: WB, IF/ICC

Recommended dilutions: WB: 1/500 - 1/2000, IF/ICC: 1/50 - 1/200. Optimal dilutions/concentrations should be determined by the end user.

Immunogen: KLH-conjugated synthetic peptide of human ATF6.

Purification: Affinity chromatography.

Form: Liquid

Isotype: IgG

Specificity: Recognizes endogenous levels of ATF6 protein.

Abbexa Ltd, Innovation Centre, Cambridge Science Park, Cambridge, CB4 0EY, UK
Telephone: +44 (0) 1223 755950 - Fax: +44 (0) 1223 755951 - E-Mail: info@abbexa.com

Storage: Aliquot and store at -20 °C. Avoid repeated freeze/thaw cycles.

GeneID: [22926](#) [226641](#) [304962](#)

Gene Symbol: ATF6

Buffer: 0.42% Potassium phosphate, 0.87% Sodium chloride, pH 7.3, 30% glycerol, and 0.01% sodium azide.

Note: This product is for research use only.