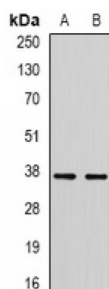
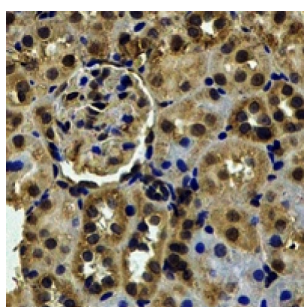
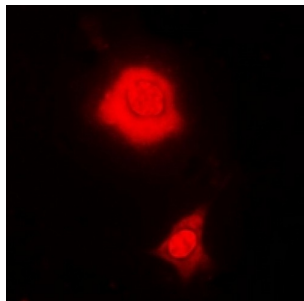


Abbexa Ltd, Innovation Centre, Cambridge Science Park, Cambridge, CB4 0EY, UK  
Telephone: +44 (0) 1223 755950 - Fax: +44 (0) 1223 755951 - E-Mail: info@abbexa.com

## RNA Binding Fox-1 Homolog 3 (RBFOX3) Antibody

Catalogue No.: abx141571



RBFOX3 Antibody is a Rabbit Polyclonal against RBFOX3.

**Target:** RBFOX3

**Reactivity:** Human, Mouse, Rat

**Host:** Rabbit

**Clonality:** Polyclonal

**Tested Applications:** WB, IHC, IF/ICC

**Recommended dilutions:** WB: 1/500 - 1/2000, IHC: 1/50 - 1/200, IF/ICC: 1/50 - 1/200. Optimal dilutions/concentrations should be determined by the end user.

**Immunogen:** Recombinant full length protein of human RBFOX3.

Abbexa Ltd, Innovation Centre, Cambridge Science Park, Cambridge, CB4 0EY, UK  
Telephone: +44 (0) 1223 755950 - Fax: +44 (0) 1223 755951 - E-Mail: [info@abbexa.com](mailto:info@abbexa.com)

**Purification:** Affinity chromatography.

**Form:** Liquid

**Isotype:** IgG

**Specificity:** Recognizes endogenous levels of RBFOX3 protein.

**Storage:** Aliquot and store at -20 °C. Avoid repeated freeze/thaw cycles.

**GeneID:** [146713 52897](#)

**Gene Symbol:** RBFOX3

**Buffer:** 0.42% Potassium phosphate, 0.87% Sodium chloride, pH 7.3, 30% glycerol, and 0.01% sodium azide.

**Note:** This product is for research use only.