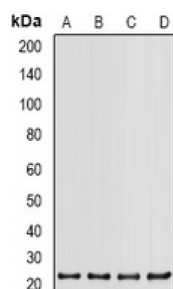
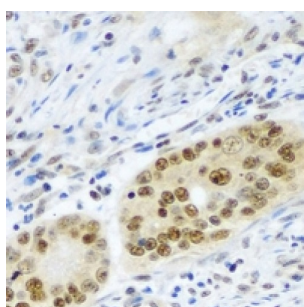
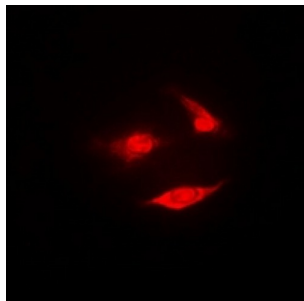


Abbexa Ltd, Innovation Centre, Cambridge Science Park, Cambridge, CB4 0EY, UK  
Telephone: +44 (0) 1223 755950 - Fax: +44 (0) 1223 755951 - E-Mail: info@abbexa.com

### Proteasome Subunit Beta Type 2 (PSMB2) Antibody

Catalogue No.: abx141758



PSMB2 Antibody is a Rabbit Polyclonal against PSMB2.

**Target:** PSMB2

**Reactivity:** Human, Mouse, Rat

**Host:** Rabbit

**Clonality:** Polyclonal

**Tested Applications:** WB, IHC, IF/ICC

**Recommended dilutions:** WB: 1/500 - 1/2000, IHC: 1/50 - 1/200, IF/ICC: 1/50 - 1/200. Optimal dilutions/concentrations should be determined by the end user.

**Immunogen:** Recombinant full length protein of human PSMB2.

Abbexa Ltd, Innovation Centre, Cambridge Science Park, Cambridge, CB4 0EY, UK  
Telephone: +44 (0) 1223 755950 - Fax: +44 (0) 1223 755951 - E-Mail: [info@abbexa.com](mailto:info@abbexa.com)

<b>Purification:</b>	Affinity chromatography.
<b>Form:</b>	Liquid
<b>Isotype:</b>	IgG
<b>Specificity:</b>	Recognizes endogenous levels of PSMB2 protein.
<b>Storage:</b>	Aliquot and store at -20 °C. Avoid repeated freeze/thaw cycles.
<b>GeneID:</b>	<a href="#">5690</a> <a href="#">26445</a> <a href="#">29675</a>
<b>Gene Symbol:</b>	PSMB2
<b>Buffer:</b>	0.42% Potassium phosphate, 0.87% Sodium chloride, pH 7.3, 30% glycerol, and 0.01% sodium azide.
<b>Note:</b>	This product is for research use only.