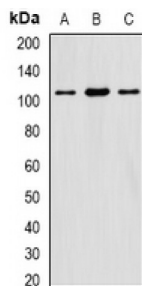
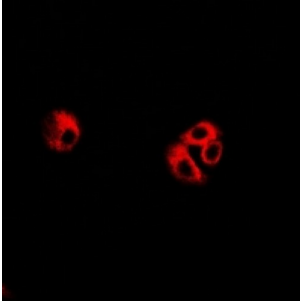


Eukaryotic Translation Initiation Factor 3 Subunit C (eIF3C) Antibody

Catalogue No.: abx141939



eIF3C Antibody is a Rabbit Polyclonal against eIF3C.

Target: eIF3C**Reactivity:** Human, Mouse, Rat**Host:** Rabbit**Clonality:** Polyclonal**Tested Applications:** WB, IF/ICC**Recommended dilutions:** WB: 1/500 - 1/2000, IF/ICC: 1/50 - 1/100. Optimal dilutions/concentrations should be determined by the end user.**Immunogen:** Recombinant full length protein of human eIF3C.**Purification:** Affinity chromatography.**Form:** Liquid**Isotype:** IgG**Specificity:** Recognizes endogenous levels of eIF3C protein.

Abbexa Ltd, Innovation Centre, Cambridge Science Park, Cambridge, CB4 0EY, UK
Telephone: +44 (0) 1223 755950 - Fax: +44 (0) 1223 755951 - E-Mail: info@abbexa.com

Storage: Aliquot and store at -20 °C. Avoid repeated freeze/thaw cycles.

GeneID: [8663](#) [56347](#) [293484](#)

Gene Symbol: EIF3C

Buffer: 0.42% Potassium phosphate, 0.87% Sodium chloride, pH 7.3, 30% glycerol, and 0.01% sodium azide.

Note: This product is for research use only.