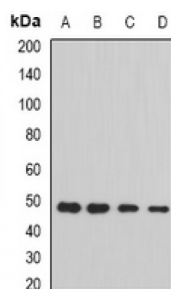
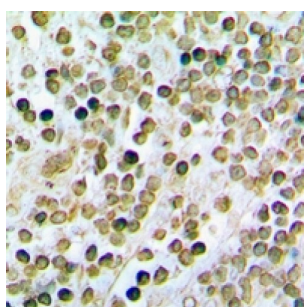
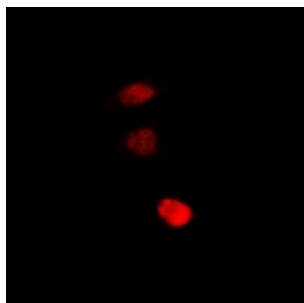


Abbexa Ltd, Innovation Centre, Cambridge Science Park, Cambridge, CB4 0EY, UK
Telephone: +44 (0) 1223 755950 - Fax: +44 (0) 1223 755951 - E-Mail: info@abbexa.com

STAM-Binding Protein (STAMBP) Antibody

Catalogue No.: abx141952



STAMBP Antibody is a Rabbit Polyclonal against STAMBP.

Target: STAMBP

Reactivity: Human, Mouse, Rat

Host: Rabbit

Clonality: Polyclonal

Tested Applications: WB, IHC, IF/ICC

Recommended dilutions: WB: 1/500 - 1/2000, IHC: 1/50 - 1/200, IF/ICC: 1/50 - 1/100. Optimal dilutions/concentrations should be determined by the end user.

Immunogen: Recombinant full length protein of human STAMBP.

Abbexa Ltd, Innovation Centre, Cambridge Science Park, Cambridge, CB4 0EY, UK
Telephone: +44 (0) 1223 755950 - Fax: +44 (0) 1223 755951 - E-Mail: info@abbexa.com

Purification:	Affinity chromatography.
Form:	Liquid
Isotype:	IgG
Specificity:	Recognizes endogenous levels of STAMBP protein.
Storage:	Aliquot and store at -20 °C. Avoid repeated freeze/thaw cycles.
GeneID:	10617 70527 171565
Gene Symbol:	STAMBP
Buffer:	0.42% Potassium phosphate, 0.87% Sodium chloride, pH 7.3, 30% glycerol, and 0.01% sodium azide.
Note:	This product is for research use only.