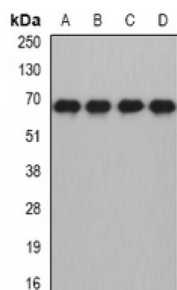
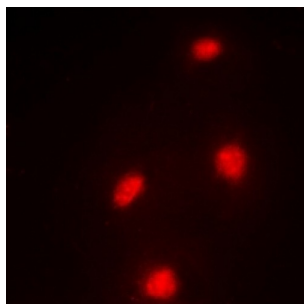


Abbexa Ltd, Innovation Centre, Cambridge Science Park, Cambridge, CB4 0EY, UK
Telephone: +44 (0) 1223 755950 - Fax: +44 (0) 1223 755951 - E-Mail: info@abbexa.com

Metal-Response Element-Binding Transcription Factor 2 (MTF-2) Antibody

Catalogue No.: abx141954



MTF-2 Antibody is a Rabbit Polyclonal against MTF-2.

Target: MTF-2

Reactivity: Human, Mouse, Rat

Host: Rabbit

Clonality: Polyclonal

Tested Applications: WB, IF/ICC

Recommended dilutions: WB: 1/500 - 1/2000, IF/ICC: 1/50 - 1/100. Optimal dilutions/concentrations should be determined by the end user.

Immunogen: Recombinant full length protein of human MTF-2.

Purification: Affinity chromatography.

Form: Liquid

Isotype: IgG

Abbexa Ltd, Innovation Centre, Cambridge Science Park, Cambridge, CB4 0EY, UK
Telephone: +44 (0) 1223 755950 - Fax: +44 (0) 1223 755951 - E-Mail: info@abbexa.com

- Specificity:** Recognizes endogenous levels of MTF-2 protein.
- Storage:** Aliquot and store at -20 °C. Avoid repeated freeze/thaw cycles.
- GeneID:** [22823](#) [17765](#)
- Gene Symbol:** MTF2
- Buffer:** 0.42% Potassium phosphate, 0.87% Sodium chloride, pH 7.3, 30% glycerol, and 0.01% sodium azide.
- Note:** This product is for research use only.