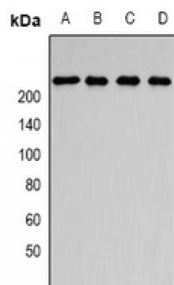
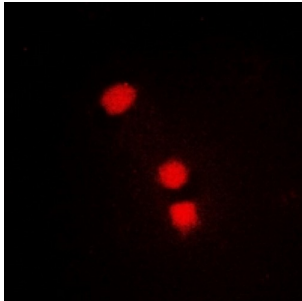


Abbexa Ltd, Innovation Centre, Cambridge Science Park, Cambridge, CB4 0EY, UK
Telephone: +44 (0) 1223 755950 - Fax: +44 (0) 1223 755951 - E-Mail: info@abbexa.com

Structural Maintenance of Chromosomes Flexible Hinge Domain-Containing Protein 1 (SMCHD1) Antibody

Catalogue No.: abx141967



SMCHD1 Antibody is a Rabbit Polyclonal against SMCHD1.

Target: SMCHD1

Reactivity: Human, Mouse, Rat

Host: Rabbit

Clonality: Polyclonal

Tested Applications: WB, IF/ICC

Recommended dilutions: WB: 1/500 - 1/2000, IF/ICC: 1/50 - 1/100. Optimal dilutions/concentrations should be determined by the end user.

Immunogen: Recombinant full length protein of human SMCHD1.

Purification: Affinity chromatography.

Form: Liquid

Isotype: IgG

Abbexa Ltd, Innovation Centre, Cambridge Science Park, Cambridge, CB4 0EY, UK
Telephone: +44 (0) 1223 755950 - Fax: +44 (0) 1223 755951 - E-Mail: info@abbexa.com

- Specificity:** Recognizes endogenous levels of SMCHD1 protein.
- Storage:** Aliquot and store at -20 °C. Avoid repeated freeze/thaw cycles.
- GeneID:** [23347 74355](#)
- Gene Symbol:** SMCHD1
- Buffer:** 0.42% Potassium phosphate, 0.87% Sodium chloride, pH 7.3, 30% glycerol, and 0.01% sodium azide.
- Note:** This product is for research use only.