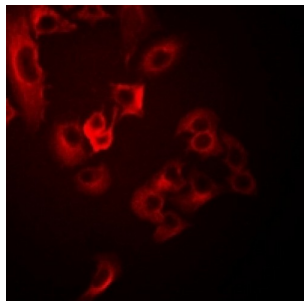


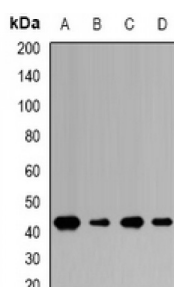
Abbexa Ltd, Innovation Centre, Cambridge Science Park, Cambridge, CB4 0EY, UK
Telephone: +44 (0) 1223 755950 - Fax: +44 (0) 1223 755951 - E-Mail: info@abbexa.com

Tumor Suppressor Candidate 4 (TUSC4) Antibody

Catalogue No.: abx142101



Immunofluorescent analysis of TUSC4 staining in HeLa cells. Formalin-fixed cells were permeabilized with 0.1% Triton X-100 in TBS for 5-10 minutes and blocked with 3% BSA-PBS for 30 minutes at room temperature. Cells were probed with the primary antibody in 3% BSA-PBS and incubated overnight at 4 °C in a humidified chamber. Cells were washed with PBST and incubated with a DyLight 594-conjugated secondary antibody (red) in PBS at room temperature in the dark.



Western blot analysis of TUSC4 expression in HL60 (A), U937 (B), mouse brain (C) whole cell lysates.

TUSC4 Antibody is a Rabbit Polyclonal against TUSC4.

Target: TUSC4

Reactivity: Human, Mouse, Rat

Host: Rabbit

Clonality: Polyclonal

Tested Applications: WB, IF/ICC

Recommended dilutions: WB: 1/500 - 1/2000, IF/ICC: 1/50 - 1/200. Optimal dilutions/concentrations should be determined by the end user.

Immunogen: Recombinant full length protein of human TUSC4.

Purification: Affinity Chromatography.

Form: Liquid

Isotype: IgG

Specificity: Recognizes endogenous levels of TUSC4 protein.

Abbexa Ltd, Innovation Centre, Cambridge Science Park, Cambridge, CB4 0EY, UK
Telephone: +44 (0) 1223 755950 - Fax: +44 (0) 1223 755951 - E-Mail: info@abbexa.com

Storage:	Aliquot and store at -20°C for one year. Avoid freeze/thaw cycles.
Swiss Prot:	<u>Q8WTW4</u>
GeneID:	<u>10641</u> <u>56032</u>
Gene Symbol:	NPRL2
Buffer:	0.42% Potassium phosphate, 0.87% Sodium chloride, pH 7.3, 30% glycerol, and 0.01% sodium azide.
Note:	This product is for research use only.