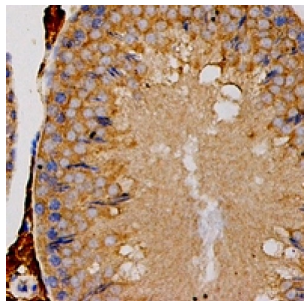


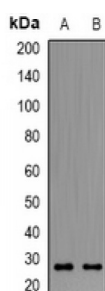
Abbexa Ltd, Innovation Centre, Cambridge Science Park, Cambridge, CB4 0EY, UK
Telephone: +44 (0) 1223 755950 - Fax: +44 (0) 1223 755951 - E-Mail: info@abbexa.com

Oxidized Low Density Lipoprotein Receptor 1 (OLR1) Antibody

Catalogue No.: abx142115



Immunohistochemical analysis of OLR1 staining in mouse testis formalin fixed paraffin embedded tissue section. The section was pre-treated using heat mediated antigen retrieval with sodium citrate buffer (pH 6.0). The section was then incubated with the antibody at room temperature and detected using an HRP conjugated compact polymer system. DAB was used as the chromogen. The section was then counterstained with haematoxylin and mounted with DPX.



Western blot analysis of OLR1 expression in Hela (A), HepG2 (B) whole cell lysates.

OLR1 Antibody is a Rabbit Polyclonal against OLR1.

Target: OLR1

Reactivity: Human, Mouse

Host: Rabbit

Clonality: Polyclonal

Tested Applications: WB, IHC

Recommended dilutions: WB: 1/500 - 1/2000, IHC: 1/50 - 1/200. Optimal dilutions/concentrations should be determined by the end user.

Immunogen: Recombinant full length protein of human OLR1.

Purification: Affinity Chromatography.

Form: Liquid

Isotype: IgG

Specificity: Recognizes endogenous levels of OLR1 protein.

Abbexa Ltd, Innovation Centre, Cambridge Science Park, Cambridge, CB4 0EY, UK
Telephone: +44 (0) 1223 755950 - Fax: +44 (0) 1223 755951 - E-Mail: info@abbexa.com

Storage:	Aliquot and store at -20°C for one year. Avoid freeze/thaw cycles.
Swiss Prot:	<u>P78380</u>
GeneID:	<u>4973 108078</u>
Gene Symbol:	OLR1
Buffer:	0.42% Potassium phosphate, 0.87% Sodium chloride, pH 7.3, 30% glycerol, and 0.01% sodium azide.
Note:	This product is for research use only.