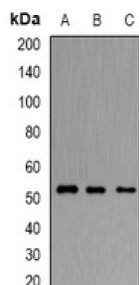


Abbexa Ltd, Innovation Centre, Cambridge Science Park, Cambridge, CB4 0EY, UK
 Telephone: +44 (0) 1223 755950 - Fax: +44 (0) 1223 755951 - E-Mail: info@abbexa.com

Nociceptin Receptor (ORL1) Antibody

Catalogue No.: abx142116



Western blot analysis of ORL1 expression in K562 (A), SW620 (B), U87 (C) whole cell lysates.

ORL1 Antibody is a Rabbit Polyclonal against ORL1.

Target: ORL1

Reactivity: Human, Mouse, Rat

Host: Rabbit

Clonality: Polyclonal

Tested Applications: WB

Recommended dilutions: WB: 1/500 - 1/2000. Optimal dilutions/concentrations should be determined by the end user.

Immunogen: KLH-conjugated synthetic peptide of human ORL1.

Purification: Affinity Chromatography.

Form: Liquid

Isotype: IgG

Specificity: Recognizes endogenous levels of ORL1 protein.

Storage: Aliquot and store at -20°C for one year. Avoid freeze/thaw cycles.

Swiss Prot: [P41146](#)

GeneID: [4987](#) [18389](#) [29256](#)

Gene Symbol: OPRL1

Abbexa Ltd, Innovation Centre, Cambridge Science Park, Cambridge, CB4 0EY, UK
Telephone: +44 (0) 1223 755950 - Fax: +44 (0) 1223 755951 - E-Mail: info@abbexa.com

Buffer: 0.42% Potassium phosphate, 0.87% Sodium chloride, pH 7.3, 30% glycerol, and 0.01% sodium azide.

Note: This product is for research use only.