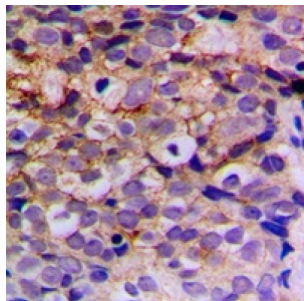


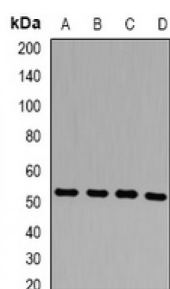
Abbexa Ltd, Innovation Centre, Cambridge Science Park, Cambridge, CB4 0EY, UK
Telephone: +44 (0) 1223 755950 - Fax: +44 (0) 1223 755951 - E-Mail: info@abbexa.com

Presenilin 2 (PSEN2) Antibody

Catalogue No.: abx142176



Immunohistochemical analysis of Presenilin 2 staining in human breast cancer formalin fixed paraffin embedded tissue section. The section was pre-treated using heat mediated antigen retrieval with sodium citrate buffer (pH 6.0). The section was then incubated with the antibody at room temperature and detected using an HRP conjugated compact polymer system. DAB was used as the chromogen. The section was then counterstained with haematoxylin and mounted with DPX.



Western blot analysis of Presenilin 2 expression in HepG2 (A), Hela (B), mouse liver (C), rat liver (D) whole cell lysates.

Presenilin 2 Antibody is a Rabbit Polyclonal against Presenilin 2.

Target: Presenilin 2

Reactivity: Human, Rat

Host: Rabbit

Clonality: Polyclonal

Tested Applications: WB, IHC

Recommended dilutions: WB: 1/500 - 1/2000, IHC: 1/50 - 1/100. Optimal dilutions/concentrations should be determined by the end user.

Immunogen: KLH-conjugated synthetic peptide of human Presenilin 2.

Purification: Affinity Chromatography.

Form: Liquid

Isotype: IgG

Specificity: Recognizes endogenous levels of Presenilin 2 protein.

Abbexa Ltd, Innovation Centre, Cambridge Science Park, Cambridge, CB4 0EY, UK
Telephone: +44 (0) 1223 755950 - Fax: +44 (0) 1223 755951 - E-Mail: info@abbexa.com

Storage:	Aliquot and store at -20°C for one year. Avoid freeze/thaw cycles.
Swiss Prot:	<u>P49810</u>
GeneID:	<u>566481751</u>
Gene Symbol:	PSEN2
Buffer:	0.42% Potassium phosphate, 0.87% Sodium chloride, pH 7.3, 30% glycerol, and 0.01% sodium azide.
Note:	This product is for research use only.