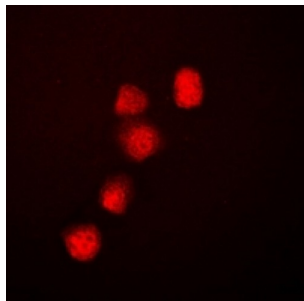
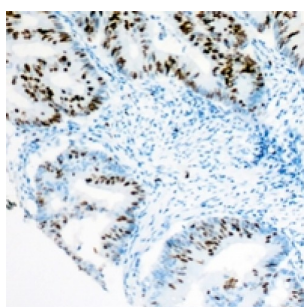


## Transcription Activator BRG1 (BRG1) Antibody

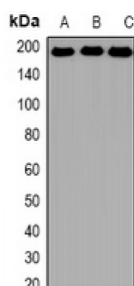
Catalogue No.: abx142231



Immunofluorescent analysis of BRG1 staining in HeLa cells. Formalin-fixed cells were permeabilized with 0.1% Triton X-100 in TBS for 5-10 minutes and blocked with 3% BSA-PBS for 30 minutes at room temperature. Cells were probed with the primary antibody in 3% BSA-PBS and incubated overnight at 4 °C in a humidified chamber. Cells were washed with PBST and incubated with a DyLight 594-conjugated secondary antibody (red) in PBS at room temperature in the dark.



Immunohistochemical analysis of BRG1 staining in human colon cancer formalin fixed paraffin embedded tissue section. The section was pre-treated using heat mediated antigen retrieval with sodium citrate buffer (pH 6.0). The section was then incubated with the antibody at room temperature and detected using an HRP conjugated compact polymer system. DAB was used as the chromogen. The section was then counterstained with haematoxylin and mounted with DPX.



Western blot analysis of BRG1 expression in HeLa (A), K562 (B), NIH3T3 (C) whole cell lysates.

BRG1 Antibody is a Rabbit Polyclonal against BRG1.

**Target:** BRG1

**Reactivity:** Human, Mouse, Rat

**Host:** Rabbit

**Clonality:** Polyclonal

**Tested Applications:** WB, IHC, IF/ICC, IP

**Recommended dilutions:** WB: 1/500 - 1/2000, IHC: 1/50 - 1/200, IF/ICC: 1/50 - 1/200, IP 1/20 - 1/50. Optimal dilutions/concentrations should be determined by the end user.

**Immunogen:** KLH-conjugated synthetic peptide of human BRG1.

Abbexa Ltd, Innovation Centre, Cambridge Science Park, Cambridge, CB4 0EY, UK  
Telephone: +44 (0) 1223 755950 - Fax: +44 (0) 1223 755951 - E-Mail: [info@abbexa.com](mailto:info@abbexa.com)

<b>Purification:</b>	Affinity Chromatography.
<b>Form:</b>	Liquid
<b>Isotype:</b>	IgG
<b>Specificity:</b>	Recognizes endogenous levels of BRG1 protein.
<b>Storage:</b>	Aliquot and store at -20°C for one year. Avoid freeze/thaw cycles.
<b>Swiss Prot:</b>	<a href="#">P51532</a>
<b>GeneID:</b>	<a href="#">6597</a> <a href="#">20586</a>
<b>Gene Symbol:</b>	SMARCA4
<b>Buffer:</b>	0.42% Potassium phosphate, 0.87% Sodium chloride, pH 7.3, 30% glycerol, and 0.01% sodium azide.
<b>Note:</b>	This product is for research use only.