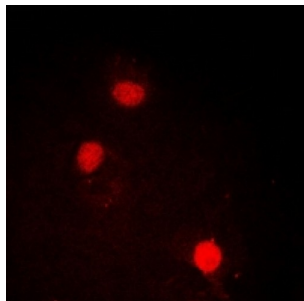
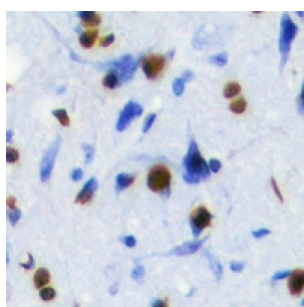


## Sex Determining Region Y Box Protein 2 (SOX2) Antibody

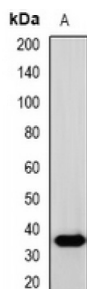
Catalogue No.: abx142239



Immunofluorescent analysis of SOX2 staining in MCF7 cells. Formalin-fixed cells were permeabilized with 0.1% Triton X-100 in TBS for 5-10 minutes and blocked with 3% BSA-PBS for 30 minutes at room temperature. Cells were probed with the primary antibody in 3% BSA-PBS and incubated overnight at 4 °C in a humidified chamber. Cells were washed with PBST and incubated with a DyLight 594-conjugated secondary antibody (red) in PBS at room temperature in the dark.



Immunohistochemical analysis of SOX2 staining in rat brain formalin fixed paraffin embedded tissue section. The section was pre-treated using heat mediated antigen retrieval with sodium citrate buffer (pH 6.0). The section was then incubated with the antibody at room temperature and detected using an HRP conjugated compact polymer system. DAB was used as the chromogen. The section was then counterstained with haematoxylin and mounted with DPX.



Western blot analysis of SOX2 expression in PC3 (A) whole cell lysates.

SOX2 Antibody is a Rabbit Polyclonal against SOX2.

**Target:** SOX2

**Reactivity:** Human, Mouse, Rat

**Host:** Rabbit

**Clonality:** Polyclonal

**Tested Applications:** WB, IHC, IF/ICC

**Recommended dilutions:** WB: 1/500 - 1/2000, IHC: 1/50 - 1/200, IF/ICC: 1/50 - 1/200. Optimal dilutions/concentrations should be determined by the end user.

**Immunogen:** Recombinant full length protein of human SOX2.

Abbexa Ltd, Innovation Centre, Cambridge Science Park, Cambridge, CB4 0EY, UK  
Telephone: +44 (0) 1223 755950 - Fax: +44 (0) 1223 755951 - E-Mail: [info@abbexa.com](mailto:info@abbexa.com)

|                      |   |
|----------------------|---|
| <b>Purification:</b> | Affinity Chromatography.  |
| <b>Form:</b>         | Liquid  |
| <b>Isotype:</b>      | IgG   |
| <b>Specificity:</b>  | Recognizes endogenous levels of SOX2 protein.   |
| <b>Storage:</b>      | Aliquot and store at -20°C for one year. Avoid freeze/thaw cycles.                              |
| <b>Swiss Prot:</b>   | <a href="#">P48431</a>  |
| <b>GeneID:</b>       | <a href="#">6657 20674</a>  |
| <b>Gene Symbol:</b>  | SOX2  |
| <b>Buffer:</b>       | 0.42% Potassium phosphate, 0.87% Sodium chloride, pH 7.3, 30% glycerol, and 0.01% sodium azide. |
| <b>Note:</b>         | This product is for research use only.  |