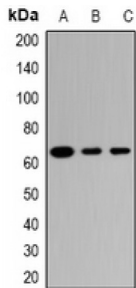


GTP-Binding Protein ARD-1 (TRIM23) Antibody

Catalogue No.: abx142279



Western blot analysis of TRIM23 expression in PC12 (A), mouse spleen (B), mouse brain (C) whole cell lysates.

TRIM23 Antibody is a Rabbit Polyclonal against TRIM23.

Target: TRIM23

Reactivity: Human, Mouse

Host: Rabbit

Clonality: Polyclonal

Tested Applications: WB

Recommended dilutions: WB: 1/500 - 1/2000. Optimal dilutions/concentrations should be determined by the end user.

Immunogen: Recombinant full length protein of human TRIM23.

Purification: Affinity Chromatography.

Form: Liquid

Isotype: IgG

Specificity: Recognizes endogenous levels of TRIM23 protein.

Storage: Aliquot and store at -20°C for one year. Avoid freeze/thaw cycles.

Swiss Prot: [P36406](#)

GeneID: [373 81003](#)

Gene Symbol: TRIM23

Abbexa Ltd, Innovation Centre, Cambridge Science Park, Cambridge, CB4 0EY, UK
Telephone: +44 (0) 1223 755950 - Fax: +44 (0) 1223 755951 - E-Mail: info@abbexa.com

Buffer: 0.42% Potassium phosphate, 0.87% Sodium chloride, pH 7.3, 30% glycerol, and 0.01% sodium azide.

Note: This product is for research use only.