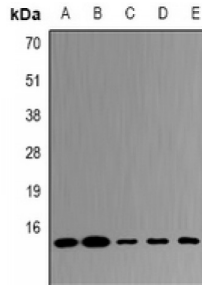


Abbexa Ltd, Innovation Centre, Cambridge Science Park, Cambridge, CB4 0EY, UK  
Telephone: +44 (0) 1223 755950 - Fax: +44 (0) 1223 755951 - E-Mail: info@abbexa.com

## Ubiquitin-Conjugating Enzyme E2 D4 (UBE2D4) Antibody

Catalogue No.: abx142291



Western blot analysis of UBE2D4 expression in HepG2 (A), MCF7 (B), mouse liver (C), mouse kidney (D), rat lung (E) whole cell lysates.

UBE2D4 Antibody is a Rabbit Polyclonal against UBE2D4.

**Target:** UBE2D4

**Reactivity:** Human, Mouse, Rat

**Host:** Rabbit

**Clonality:** Polyclonal

**Tested Applications:** WB

**Recommended dilutions:** WB: 1/500 - 1/2000. Optimal dilutions/concentrations should be determined by the end user.

**Immunogen:** Recombinant full length protein of human UBE2D4.

**Purification:** Affinity Chromatography.

**Form:** Liquid

**Isotype:** IgG

**Specificity:** Recognizes endogenous levels of UBE2D4 protein.

**Storage:** Aliquot and store at -20°C for one year. Avoid freeze/thaw cycles.

**Swiss Prot:** [Q9Y2X8](#)

**GeneID:** [51619](#)

**Gene Symbol:** UBE2D4

Abbexa Ltd, Innovation Centre, Cambridge Science Park, Cambridge, CB4 0EY, UK  
Telephone: +44 (0) 1223 755950 - Fax: +44 (0) 1223 755951 - E-Mail: [info@abbexa.com](mailto:info@abbexa.com)

**Buffer:** 0.42% Potassium phosphate, 0.87% Sodium chloride, pH 7.3, 30% glycerol, and 0.01% sodium azide.

**Note:** This product is for research use only.