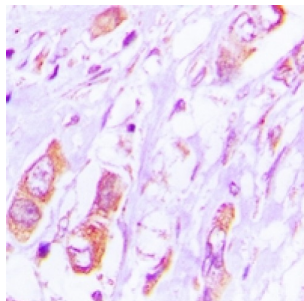


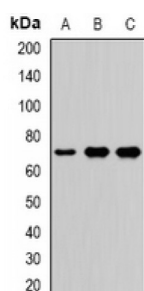
Abbexa Ltd, Innovation Centre, Cambridge Science Park, Cambridge, CB4 0EY, UK  
Telephone: +44 (0) 1223 755950 - Fax: +44 (0) 1223 755951 - E-Mail: [info@abbexa.com](mailto:info@abbexa.com)

## Vang-Like Protein 2 (LTAP) Antibody

Catalogue No.: abx142304



Immunohistochemical analysis of LTAP staining in human lung cancer formalin fixed paraffin embedded tissue section. The section was pre-treated using heat mediated antigen retrieval with sodium citrate buffer (pH 6.0). The section was then incubated with the antibody at room temperature and detected using an HRP conjugated compact polymer system. DAB was used as the chromogen. The section was then counterstained with haematoxylin and mounted with DPX.



Western blot analysis of LTAP expression in Hela (A), A549 (B), mouse brain (C) whole cell lysates.

LTAP Antibody is a Rabbit Polyclonal against LTAP.

**Target:** LTAP

**Reactivity:** Human, Mouse, Rat

**Host:** Rabbit

**Clonality:** Polyclonal

**Tested Applications:** WB, IHC

**Recommended dilutions:** WB: 1/500 - 1/2000, IHC: 1/50 - 1/100. Optimal dilutions/concentrations should be determined by the end user.

**Immunogen:** Recombinant full length protein of human LTAP.

**Purification:** Affinity Chromatography.

**Form:** Liquid

**Isotype:** IgG

**Specificity:** Recognizes endogenous levels of LTAP protein.

Abbexa Ltd, Innovation Centre, Cambridge Science Park, Cambridge, CB4 0EY, UK  
Telephone: +44 (0) 1223 755950 - Fax: +44 (0) 1223 755951 - E-Mail: [info@abbexa.com](mailto:info@abbexa.com)

<b>Storage:</b>	Aliquot and store at -20°C for one year. Avoid freeze/thaw cycles.
<b>Swiss Prot:</b>	<a href="#"><u>Q9ULK5</u></a>
<b>GeneID:</b>	<a href="#"><u>57216</u></a> <a href="#"><u>93840</u></a> <a href="#"><u>289229</u></a>
<b>Gene Symbol:</b>	VANGL2
<b>Buffer:</b>	0.42% Potassium phosphate, 0.87% Sodium chloride, pH 7.3, 30% glycerol, and 0.01% sodium azide.
<b>Note:</b>	This product is for research use only.