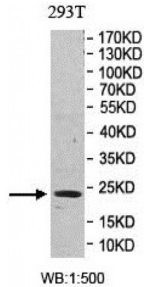


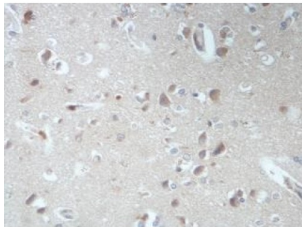
Abbexa Ltd, Innovation Centre, Cambridge Science Park, Cambridge, CB4 0EY, UK
Telephone: +44 (0) 1223 755950 - Fax: +44 (0) 1223 755951 - E-Mail: info@abbexa.com

Ras Homolog Gene Family, Member Q (RHOQ) Antibody

Catalogue No.: abx146452



WB analysis of 293T lysates, using RHOQ antibody



IHC analysis of formalin-fixed paraffin-embedded human brain tissue, showing cytoplasmic staining, using RHOQ antibody (1/100 dilution).

RHOQ Antibody is a Rabbit Polyclonal against RHOQ.

Target: RHOQ

Reactivity: Human, Mouse, Rat

Host: Rabbit

Clonality: Polyclonal

Tested Applications: ELISA, WB, IHC

Recommended dilutions: ELISA: 1/20000 - 1/80000, WB: 1/200 - 1/1000, IHC: 1/100 - 1/500. Optimal dilutions/concentrations should be determined by the end user.

Purification: Antigen Affinity Purified.

Form: Lyophilized

Reconstitution: Reconstitute in 200 μ l of double-distilled H₂O. For extended storage, we recommend adding an equal volume of glycerol to make a final glycerol concentration of 50%.

Isotype: IgG

Conjugation: Unconjugated

Abbexa Ltd, Innovation Centre, Cambridge Science Park, Cambridge, CB4 0EY, UK
Telephone: +44 (0) 1223 755950 - Fax: +44 (0) 1223 755951 - E-Mail: info@abbexa.com

Storage: Store at -20 °C. Avoid repeating freeze/thaw cycles.

NCBI Accession: BC056154

Buffer: Prior to lyophilization: 1% BSA and 0.02% NaN₃.

Note: This product is for research use only.