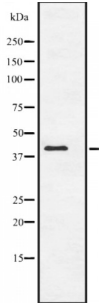


Abbexa Ltd, Innovation Centre, Cambridge Science Park, Cambridge, CB4 0EY, UK
Telephone: +44 (0) 1223 755950 - Fax: +44 (0) 1223 755951 - E-Mail: info@abbexa.com

Actin Alpha 1, Cardiac Muscle (ACTC1) Antibody

Catalogue No.: abx146544



Western blot analysis of ACTC1 expression in NIH3T3 whole cell lysate. The lane on the left is treated with the antigen-specific peptide.

ACTC1 Antibody is a Rabbit Polyclonal against ACTC1.

Target: ACTC1

Reactivity: Human, Mouse, Rat

Host: Rabbit

Clonality: Polyclonal

Tested Applications: WB

Recommended dilutions: WB: 1/500 - 1/2000. Optimal dilutions/concentrations should be determined by the end user.

Immunogen: Synthesised peptide derived from human ACTC1

Purification: Purified by affinity chromatography using epitope-specific peptide.

Form: Liquid

Conjugation: Unconjugated

Specificity: ACTC1 antibody detects endogenous levels of total ACTC1

Storage: Aliquot and store at -20 °C. Avoid repeated freeze/thaw cycles.

Molecular Weight: 42 kDa

Swiss Prot: [P68032](#)

GeneID: [70](#)

Abbexa Ltd, Innovation Centre, Cambridge Science Park, Cambridge, CB4 0EY, UK
Telephone: +44 (0) 1223 755950 - Fax: +44 (0) 1223 755951 - E-Mail: info@abbexa.com

Gene Symbol: ACTC1

Ensembl: ENSG00000159251

Concentration: 1 mg/ml

Buffer: PBS, pH 7.4, 150 mM NaCl, 0.02% sodium azide and 50% glycerol.

Note: This product is for research use only.