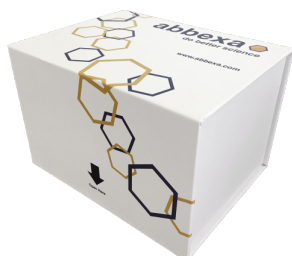


Mouse Vascular Endothelial Growth Factor Receptor 1 (FLT1/VEGFR1) ELISA Kit

Catalogue No.: [abx154847](#)

Mouse VEGFR1 ELISA Kit is a sandwich ELISA kit for use with Serum, plasma and other biological fluids. This assay has high sensitivity and excellent specificity for detection of Vascular Endothelial Growth Factor Receptor 1 (VEGFR1). No significant cross-reactivity or interference between Vascular Endothelial Growth Factor Receptor 1 (VEGFR1) and analogues was observed.

Please note that this kit is also available as a CLIA Kit [abx190478](#).

Target: VEGFR1

Reactivity: Mouse

Tested Applications: ELISA

Recommended dilutions: Optimal dilutions/concentrations should be determined by the end user.

Test Range: 0.156 ng/ml - 10 ng/ml

Sensitivity: < 0.058 ng/ml

Validity: The validity for this kit is 6 months.

Storage: Store at 2°C to 8°C upon receipt.

Stability: The stability of the kit is determined by the rate of activity loss. The loss rate is less than 5% within the expiration date under appropriate storage conditions. To minimize performance fluctuations, operation procedures and lab conditions should be strictly controlled. It is also strongly suggested that the whole assay is performed by the same user throughout.

Swiss Prot: [P35969](#)

Standard Form: Lyophilized

Abbexa Ltd, Innovation Centre, Cambridge Science Park, Cambridge, CB4 0EY, UK
Telephone: +44 (0) 1223 755950 - Fax: +44 (0) 1223 755951 - E-Mail: info@abbexa.com

ELISA Detection: Colorimetric

ELISA Type: Sandwich

ELISA Data: Quantitative

Sample Type: Serum, plasma and other biological fluids.

Note: This product is for research use only. The range and sensitivity is subject to change. Please contact us for the latest product information. For accurate results, sample concentrations must be diluted to mid-range of the kit. If you require a specific range, please contact us in advance or write your request in your order comments.