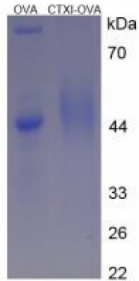


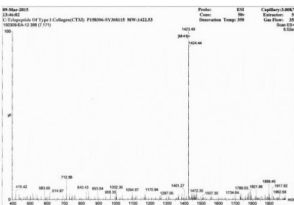
Abbexa Ltd, Innovation Centre, Cambridge Science Park, Cambridge, CB4 0EY, UK  
 Telephone: +44 (0) 1223 755950 - Fax: +44 (0) 1223 755951 - E-Mail: info@abbexa.com

## Human Cross Linked C-Telopeptide Of Type I Collagen (CTXI) Peptide (OVA)

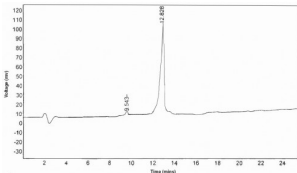
Catalogue No.: abx165690



SDS-PAGE analysis of CTXI Protein (OVA).



Mass spectrometry analysis of Human CTXI (prior to conjugation).



HPLC analysis of unconjugated Human CTXI (prior to conjugation).

C-Telopropeptide Of Type I Collagen Protein is a Human protein.

- Target:** Cross Linked C-Telopeptide Of Type I Collagen (CTXI)
- Origin:** Human
- Host:** Synthetic
- Tested Applications:** SDS-PAGE
- Purity:** > 90%
- Form:** Lyophilized
- Reconstitution:** Reconstitute in 10 mM PBS, pH 7.4, to a concentration of 0.1-1.0 mg/ml. Do not vortex.

Abbexa Ltd, Innovation Centre, Cambridge Science Park, Cambridge, CB4 0EY, UK  
Telephone: +44 (0) 1223 755950 - Fax: +44 (0) 1223 755951 - E-Mail: [info@abbexa.com](mailto:info@abbexa.com)

**Conjugation:** OVA

**Storage:** Store at 2-8 °C for up to one month. Store at -80 °C for up to one year. Avoid repeated freeze/thaw cycles.

**Swiss Prot:** [P02452](#)

**Sequence Fragment:** Glu1207-Ala1218

**Sequence:** EKAH DGGRYYRA

**Activity:** Not tested

**Buffer:** Prior to lyophilization: 10 mM PBS, pH 7.4.

**Note:** This product is for research use only.