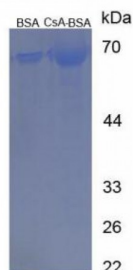


Abbexa Ltd, Innovation Centre, Cambridge Science Park, Cambridge, CB4 0EY, UK
Telephone: +44 (0) 1223 755950 - Fax: +44 (0) 1223 755951 - E-Mail: info@abbexa.com

Cyclosporin A Peptide (BSA)

Catalogue No.: abx165696



SDS-PAGE analysis of Cyclosporin A Protein (BSA).

Cyclosporin A Protein is a General protein.

Target: Cyclosporin A

Origin: General

Tested Applications: ELISA, WB, IP, SDS-PAGE

Purity: 0.95

Form: Lyophilized

Conjugation: BSA

Storage: Store at 2-8 °C for up to one month. Store at -80 °C for up to one year. Avoid repeated freeze/thaw cycles.

Concentration: Prior to lyophilization: 200 µg/ml

Buffer: Prior to lyophilization: PBS, pH 7.4.

Note: This product is for research use only.