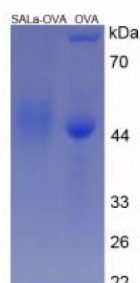


Abbexa Ltd, Innovation Centre, Cambridge Science Park, Cambridge, CB4 0EY, UK  
Telephone: +44 (0) 1223 755950 - Fax: +44 (0) 1223 755951 - E-Mail: info@abbexa.com

## Salusin alpha Peptide (OVA)

Catalogue No.: abx165817



SDS-PAGE analysis of Salusin alpha Protein (OVA).

Salusin Alpha Protein is a Human protein.

**Target:** Salusin alpha

**Origin:** Human

**Tested Applications:** ELISA, WB, IP, SDS-PAGE

**Purity:** 0.9

**Form:** Lyophilized

**Conjugation:** OVA

**Storage:** Store at 2-8 °C for up to one month. Store at -80 °C for up to one year. Avoid repeated freeze/thaw cycles.

**Concentration:** Prior to lyophilization: 200 µg/ml

**Buffer:** Prior to lyophilization: PBS, pH 7.4.

**Note:** This product is for research use only.