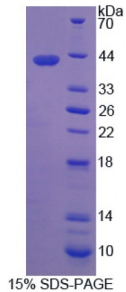


Abbexa Ltd, Innovation Centre, Cambridge Science Park, Cambridge, CB4 0EY, UK  
Telephone: +44 (0) 1223 755950 - Fax: +44 (0) 1223 755951 - E-Mail: info@abbexa.com

## Human Retinaldehyde Binding Protein 1 (RLBP1) Protein

Catalogue No.: abx166052



SDS-PAGE analysis of Retinaldehyde Binding Protein 1 Protein.

Retinaldehyde Binding Protein 1 (Recombinant) is a protein produced in Human.

**Target:** Retinaldehyde Binding Protein 1 (RLBP1)

**Origin:** Human

**Tested Applications:** ELISA, WB, IP, SDS-PAGE

**Purity:** > 98%

**Form:** Lyophilized

**Conjugation:** Unconjugated

**Storage:** Store at 2-8 °C for up to one month. Store at -80 °C for up to one year. Avoid repeated freeze/thaw cycles.

**Expression:** Recombinant

**Molecular Weight:** 40kDa

**Sequence Fragment:** Met1- Phe317

**Tag:** Two N-terminal tags, his-tag and T7 tag

**Activity:** Not tested

**Concentration:** Prior to lyophilization: 200 µg/ml

**Buffer:** Prior to lyophilization: PBS, pH 7.4, containing 0.01% Sarcosyl, 1 mM DTT, 5% Trehalose and Proclin-300.

**Note:** This product is for research use only.