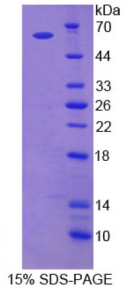


Human Adenylyl Cyclase Associated Protein 2 (CAP2) Protein

Catalogue No.: abx166148



SDS-PAGE analysis of CAP2 Protein.

CAP2 Protein (Recombinant) is a protein produced in Human.

Target: Adenylyl Cyclase Associated Protein 2 (CAP2)**Origin:** Human**Tested Applications:** ELISA, WB, IP, SDS-PAGE**Purity:** > 85%**Form:** Lyophilized**Conjugation:** Unconjugated**Storage:** Store at 2-8 °C for up to one month. Store at -80 °C for up to one year. Avoid repeated freeze/thaw cycles.**Expression:** Recombinant**Molecular Weight:** 60kDa**Sequence Fragment:** Met1-Ala477**Tag:** Two N-terminal tags, His-tag and S-tag**Activity:** Not tested**Concentration:** Prior to lyophilization: 200 µg/ml**Buffer:** Prior to lyophilization: PBS, pH 7.4, containing 0.01% Sarcosyl, 1 mM DTT, 5% Trehalose and Proclin-300.**Note:** This product is for research use only.