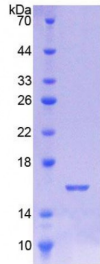


Human Ubiquitin Activating Enzyme E1 Like Protein (UBE1L) Protein

Catalogue No.: abx166198



SDS-PAGE analysis of Ubiquitin Activating Enzyme E1 Like Protein.

Ubiquitin Activating Enzyme E1 Like Protein (Recombinant) is a protein produced in Human.

Target:	Ubiquitin Activating Enzyme E1 Like Protein (UBE1L)
Origin:	Human
Tested Applications:	ELISA, WB, IP, SDS-PAGE
Purity:	> 95%
Form:	Lyophilized
Conjugation:	Unconjugated
Storage:	Store at 2-8 °C for up to one month. Store at -80 °C for up to one year. Avoid repeated freeze/thaw cycles.
Expression:	Recombinant
Molecular Weight:	16kDa
Sequence Fragment:	Lys429-Val488+G
Tag:	N-terminal His-tag, T7 tag
Activity:	Not tested
Concentration:	Prior to lyophilization: 200 µg/ml
Buffer:	Prior to lyophilization: PBS, pH 7.4, containing 0.01% Sarcosyl, 1 mM DTT, 5% Trehalose and Proclin-300.
Note:	This product is for research use only.