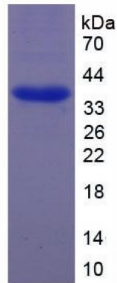


**Human Cyclic AMP Response Element Binding Protein (CREB) Protein**

Catalogue No.: abx166199



SDS-PAGE analysis of Cyclic AMP Response Element Binding Protein.

Cyclic AMP Response Element Binding Protein (Recombinant) is a protein produced in Human.

<b>Target:</b>	Cyclic AMP Response Element Binding Protein (CREB)
<b>Origin:</b>	Human
<b>Tested Applications:</b>	ELISA, WB, IP, SDS-PAGE
<b>Purity:</b>	> 98%
<b>Form:</b>	Lyophilized
<b>Conjugation:</b>	Unconjugated
<b>Storage:</b>	Store at 2-8 °C for up to one month. Store at -80 °C for up to one year. Avoid repeated freeze/thaw cycles.
<b>Expression:</b>	Recombinant
<b>Molecular Weight:</b>	36kDa
<b>Sequence Fragment:</b>	Ile15-Ala142
<b>Tag:</b>	Two N-terminal tags, His-tag and T7-tag
<b>Activity:</b>	Not tested
<b>Concentration:</b>	Prior to lyophilization: 200 µg/ml
<b>Buffer:</b>	Prior to lyophilization: 20 mM Tris, 150 mM NaCl, pH 8.0, containing 1 mM EDTA, 1 mM DTT, 0.01% Sarcosyl, 5% Trehalose and Proclin-300.
<b>Note:</b>	This product is for research use only.