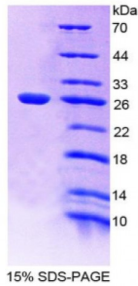


Rat Elastin Microfibril Interface Located Protein 1 (EMILIN1) Protein

Catalogue No.: abx166210



SDS-PAGE analysis of Elastin Microfibril Interface Located Protein 1 Protein.

Elastin Microfibril Interface Located Protein 1 (Recombinant) is a protein produced in Rat.

| | |
|-----------------------------|---|
| Target: | Elastin Microfibril Interface Located Protein 1 (EMILIN1) |
| Origin: | Rat |
| Tested Applications: | ELISA, WB, IP, SDS-PAGE |
| Purity: | > 98% |
| Form: | Lyophilized |
| Conjugation: | Unconjugated |
| Storage: | Store at 2-8 °C for up to one month. Store at -80 °C for up to one year. Avoid repeated freeze/thaw cycles. |
| Expression: | Recombinant |
| Molecular Weight: | 30kDa |
| Sequence Fragment: | Leu684-Gln899 |
| Tag: | Two N-terminal tags, His-tag and T7-tag |
| Activity: | Not tested |
| Concentration: | Prior to lyophilization: 200 µg/ml |
| Buffer: | Prior to lyophilization: PBS, pH 7.4, containing 0.01% Sarcosyl, 1 mM DTT, 5% Trehalose and Proclin-300. |
| Note: | This product is for research use only. |