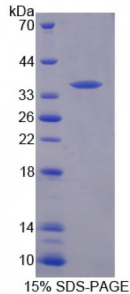


Abbexa Ltd, Innovation Centre, Cambridge Science Park, Cambridge, CB4 0EY, UK
Telephone: +44 (0) 1223 755950 - Fax: +44 (0) 1223 755951 - E-Mail: info@abbexa.com

Mouse Tyrosine Kinase With ImMunoglobulin Like And EGF Like Domains Protein 1 (Tie1) Protein

Catalogue No.: abx166239



SDS-PAGE analysis of TIE1 Protein.

TIE1 Protein (Recombinant) is a protein produced in Mouse.

Target:	Tyrosine Kinase With ImMunoglobulin Like And EGF Like Domains Protein 1 (Tie1)
Origin:	Mouse
Tested Applications:	ELISA, WB, IP, SDS-PAGE
Purity:	> 95%
Form:	Lyophilized
Conjugation:	Unconjugated
Storage:	Store at 2-8 °C for up to one month. Store at -80 °C for up to one year. Avoid repeated freeze/thaw cycles.
Expression:	Recombinant
Molecular Weight:	36kDa
Sequence Fragment:	Ile835-Val1134
Tag:	Two N-terminal tags, his-tag and T7 tag
Activity:	Not tested
Concentration:	Prior to lyophilization: 200 µg/ml
Buffer:	Prior to lyophilization: PBS, pH 7.4, containing 0.01% Sarcosyl, 1 mM DTT, 5% Trehalose and Proclin-300.

Note: This product is for research use only.